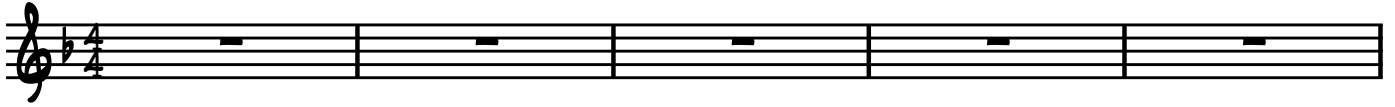


PS 23 THE LORD IS MY SHEPHERD

DOUGLAS S. SLATER

♩ = 75



6 **CHORUS** G Gm7 Dm7 Dm7/C

THE LORD IS MY SHEP - HERD; THERE IS

THE LORD IS MY SHEP - HERD THERE IS

9 Gm7 Am7 1. Dm7sus4 Dm7 2. Dm7sus4 Dm7 TO VERSES

NOTH - ING I SHALL WANT. THE WANT.

Vs 1 THE
Vs 2 BE-SIDE
Vs 3 YOU
Vs 4 ON - LY

NOTH - ING I SHALL WANT. THE WANT.

12 G G^{M7} D^{M7} D^{M7}/C B^bΔ⁷ A^{M7} D^{M7}sus⁴ D^{M7}

VERSE 1 LORD _____ IS MY SHEP HERD; I SHALL NOT WANT. IN VER-DANT

16 G^{M7} G^{M7}/F A/E D^{M7}sus⁴ D^{M7} **TO CHORUS**

THE_ PAS- TURES. HE GIVES ME_ RE - POSE. _____

20 G G^{M7} D^{M7} D^{M7}/C B^bΔ⁷ A^{M7} D^{M7}sus⁴ D^{M7}

VERSE 2 REST - FUL WA-TERS HE LEADS ME;_ HE RE-FRESH-ES_ MY SOUL. HE GUIDES ME

24 G^{M7} G^{M7}/F A/E D^{M7}sus⁴ D^{M7} **TO CHORUS**

IN_ RIGHT PATHS FOR HIS NAME'S SAKE. THE_

28 G G^{M7} D^{M7} D^{M7}/C B^bΔ⁷ A^{M7} D^{M7}sus⁴ D^{M7}

VERSE 3 SPREAD THE TA-BLE BE - FORE ME_ IN THE SIGHT OF_ MY FOES; YOU A-

32 G^{M7} G^{M7}/F A/E D^{M7}sus⁴ D^{M7} **TO CHORUS**

NOINT_ MY HEAD WITH OIL; MY CUP O - VER - FLOWS. THE_

36 G G^{m7} D^{m7} D^{m7}/C B^bΔ⁷ A^{m7} D^{m7}sus⁴ D^{m7}

VERSE 4 GOOD-NESS AND KIND-NESS FOL-Low ME... ALL THE DAYS OF MY LIFE; AND I SHALL

40 G^{m7} G^{m7}/F A/E D^{m7}sus⁴ D^{m7} **TO CHORUS**

DWELL IN THE HOUSE OF THE LORD FOR YEARS TO COME. THE...